

检测报告/Test Report

报告编号/ Report No. : WP-21037058-JC-01-02CnEnR1

样品来源/Sample Origin : 客户送样/ Customer Sample Delivery

希安斯贸易（上海）有限公司

客户名称/Client : CRC Industries Trading (Shanghai) Co., Ltd

上海市静安区武宁南路 488 号 1710 室

Room 1710, No.488 South Wuning Road,

地 址/Address: Jing'An District, Shanghai

上海微谱化工技术服务有限公司

Shanghai WEIPU Chemical Technology Service Co., Ltd

检验检测专用章

检测报告/Test Report

下列样品及样品信息由委托方提供及确认/The following sample(s) was/were submitted and identified on behalf of the applicant:

样品名称/Sample Name: 极速致冷剂/ Freeze Spray

样品描述/Sample Description: /

样品型号/Type: PR14086

其他信息/Other Information :/

检测信息/Testing information:

接样日期/Date of Sample Received: 2021-03-29

检测周期/ Testing Period: 2021-03-29~ 2021-04-06

检测要求/Test Item(s): 根据客户要求进行检测/Selected test (s) as requested by client.

检测依据/Test Criterion: 请参见下一页/Please refer to next page(s).

检测结果/Test Result: 请参见下一页/Please refer to next page(s).

编制/Complied by:



批准/ Approved by:



签发日期/ Issued Date:

2021-05-13

报告编号/Report No. : WP-21037058-JC-01-02CnEnR1 页码/Page(s) : 2 / 10

CONCLUSION :

结 论:

<u>TESTED SAMPLES</u>	<u>TEST ITEM</u>	<u>RESULT</u>
测试样品	测试项目	结果
Freeze Spray 极速致冷剂	1.RoHS Directive 2011/65/EU Annex II amending Annex (EU)2015/863 1.RoHS 指令2011/65/EU附录II的修正指令(EU)2015/863 — Lead, Cadmium, Mercury, Hexavalent Chromium, PBBs and PBDEs Content	PASS 合格
	—铅、汞、镉、六价铬、多溴联苯和多溴联苯醚含量 —Di-(2-ethylhexyl) phthalate(DEHP), Benzylbutyl phthalate(BBP), Dibutyl phthalate (DBP), Diisobutyl phthalate(DIBP) Content —邻苯二甲酸二(2-乙基己基)酯(DEHP)、邻苯二甲酸苯基丁酯(BBP)、 邻苯二甲酸二丁酯(DBP)、邻苯二甲酸二异丁酯(DIBP)含量	PASS 合格

Test Result(s):

测试结果:

Description of Specimen : Transparent liquid
样品描述 : 透明液体

1. Lead, Cadmium, Mercury, Hexavalent Chromium, PBBs and PBDEs—RoHS Directive 2011/65/EU Annex II amending Annex (EU)2015/863

1.铅、汞、镉、六价铬、多溴联苯和多溴联苯醚含量—RoHS 指令 2011/65/EU 附录II的修正指令(EU)2015/863

Test Items 测试项目	Unit 单位	Test Method 测试方法	Result 结果	MDL 检出限	Limit 限值
Lead (Pb)/铅	mg/kg	IEC 62321-5:2013, ICP-OES	N.D.	2	1000
Mercury (Hg)/汞	mg/kg	IEC 62321-4:2013+A1:2017, ICP-OES	N.D.	2	1000
Cadmium(Cd)/镉	mg/kg	IEC 62321-5:2013, ICP-OES	N.D.	2	100
Hexavalent Chromium (CrVI)/六价铬	mg/kg	IEC 62321-7-2:2017, UV-VIS	N.D.	2	1000
Monobromobiphenyl/一溴联苯	mg/kg	IEC 62321-6:2015, GC-MS	N.D.	5	-
Dibromobiphenyl/二溴联苯	mg/kg	IEC 62321-6:2015, GC-MS	N.D.	5	-
Tribromobiphenyl/三溴联苯	mg/kg	IEC 62321-6:2015, GC-MS	N.D.	5	-
Tetrabromobiphenyl/四溴联苯	mg/kg	IEC 62321-6:2015, GC-MS	N.D.	5	-
Pentabromobiphenyl/五溴联苯	mg/kg	IEC 62321-6:2015, GC-MS	N.D.	5	-
Hexabromobiphenyl/六溴联苯	mg/kg	IEC 62321-6:2015, GC-MS	N.D.	5	-
Heptabromobiphenyl/七溴联苯	mg/kg	IEC 62321-6:2015, GC-MS	N.D.	5	-
Octabromobiphenyl/八溴联苯	mg/kg	IEC 62321-6:2015, GC-MS	N.D.	5	-
Nonabromobiphenyl/九溴联苯	mg/kg	IEC 62321-6:2015, GC-MS	N.D.	5	-
Decabromobiphenyl/十溴联苯	mg/kg	IEC 62321-6:2015, GC-MS	N.D.	5	-
Sum of PBBs/多溴联苯总和	mg/kg	-	N.D.	-	1000
Monobromodiphenyl ether/一溴联苯醚	mg/kg	IEC 62321-6:2015, GC-MS	N.D.	5	-
Dibromodiphenyl ether/二溴联苯醚	mg/kg	IEC 62321-6:2015, GC-MS	N.D.	5	-
Tribromodiphenyl ether/三溴联苯醚	mg/kg	IEC 62321-6:2015, GC-MS	N.D.	5	-
Tetrabromodiphenyl ether/四溴联苯醚	mg/kg	IEC 62321-6:2015, GC-MS	N.D.	5	-
Pentabromodiphenyl ether/五溴联苯醚	mg/kg	IEC 62321-6:2015, GC-MS	N.D.	5	-
Hexabromodiphenyl ether/六溴联苯醚	mg/kg	IEC 62321-6:2015, GC-MS	N.D.	5	-
Heptabromodiphenyl ether/七溴联苯醚	mg/kg	IEC 62321-6:2015, GC-MS	N.D.	5	-
Octabromodiphenyl ether/八溴联苯醚	mg/kg	IEC 62321-6:2015, GC-MS	N.D.	5	-
Nonabromodiphenyl ether/九溴联苯醚	mg/kg	IEC 62321-6:2015, GC-MS	N.D.	5	-
Decabromodiphenyl ether/十溴联苯醚	mg/kg	IEC 62321-6:2015, GC-MS	N.D.	5	-
Sum of PBDEs/多溴联苯醚总和	mg/kg	-	N.D.	-	1000

Note:

1. mg/kg = milligram per kilogram= ppm
2. N.D. = Not Detected (<MDL)
3. MDL = Method detection limit
4. “-” = Not Regulated

注释:

1. mg/kg =毫克每千克= ppm
2. N.D. = 未检出 (<MDL)
3. MDL = 方法检测限
4. “-” = 未规定

-Di-(2-ethylhexyl) phthalate(DEHP), Benzylbutyl phthalate(BBP), Dibutyl phthalate (DBP), Diisobutyl phthalate(DIBP) Content—RoHS Directive 2011/65/EU Annex II amending Annex (EU)2015/863
-邻苯二甲酸二(2-乙基己基)酯(DEHP)、邻苯二甲酸苯基丁酯(BBP)、邻苯二甲酸二丁酯(DBP)、邻苯二甲酸二异丁酯(DIBP)含量— RoHS 指令2011/65/EU附录II的修正指令(EU)2015/863

Test method: With reference to IEC 62321-8:2017, analysis was performed by Gas Chromatograph-Mass Spectrometer (GC-MS).

测试方法：参考 IEC 62321-8:2017，使用气相色谱质谱联用仪(GC-MS)进行分析。

Test Items 测试项目	Unit 单位	Result 结果	MDL 检出限	Limit 限值
Di-(2-ethylhexyl) phthalate (DEHP) 邻苯二甲酸二(2-乙基己基)酯(DEHP)	mg/kg	N.D.	50	1000
Benzylbutyl phthalate (BBP) 邻苯二甲酸苯基丁酯(BBP)	mg/kg	N.D.	50	1000
Dibutyl phthalate (DBP) 邻苯二甲酸二丁酯(DBP)	mg/kg	N.D.	50	1000
Diisobutyl phthalate(DIBP) 邻苯二甲酸二异丁酯(DIBP)	mg/kg	N.D.	50	1000

Note:

1. mg/kg = milligram per kilogram= ppm
2. N.D. = Not Detected (<MDL)
3. MDL = Method detection limit

注释:

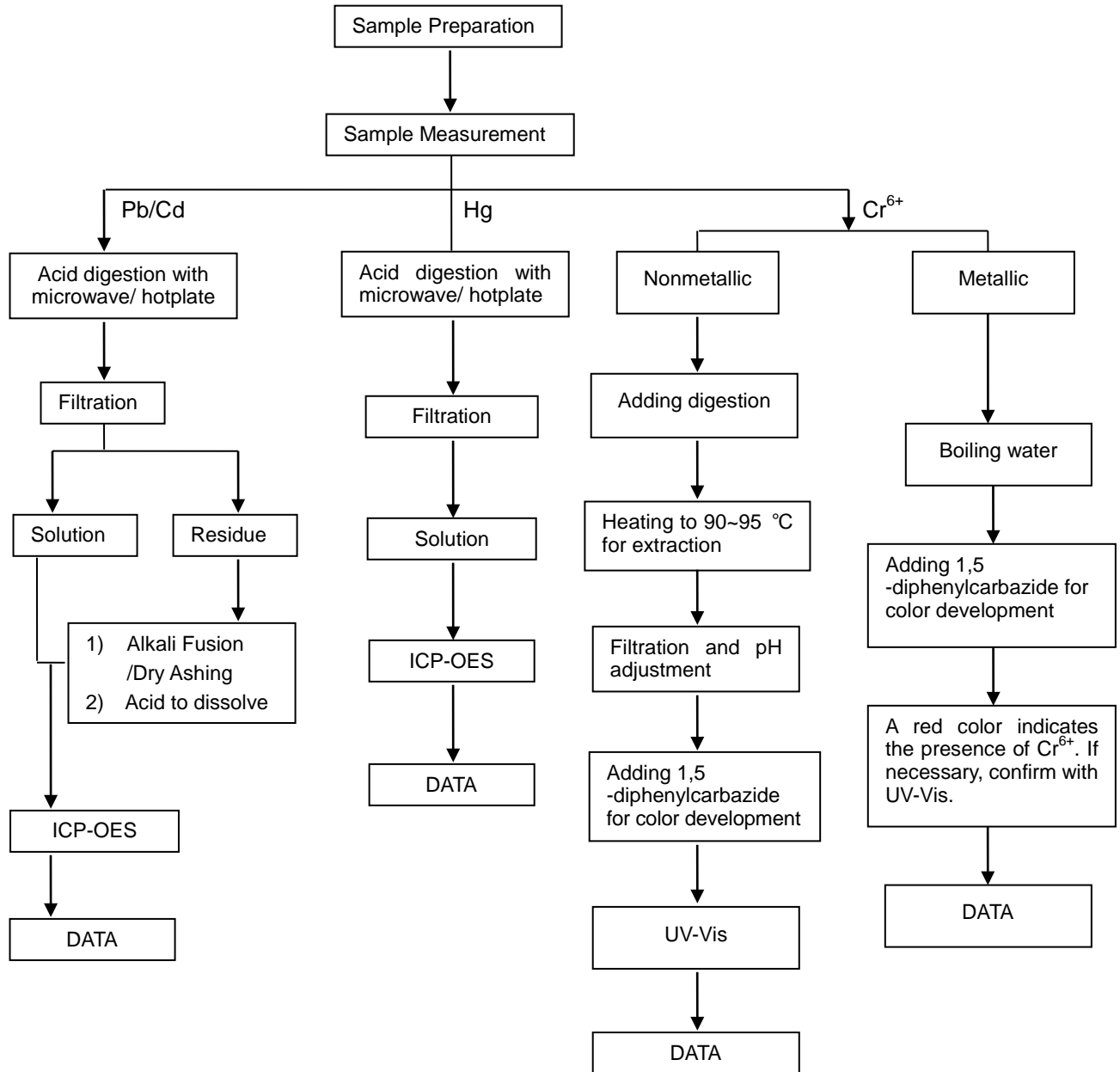
1. mg/kg =毫克每千克= ppm
2. N.D. = 未检出 (< MDL)
3. MDL = 方法检测限

Remark: As specified by applicant, to test content in the selected materials of the submitted samples. The test results are only responsible for the submitted sample.

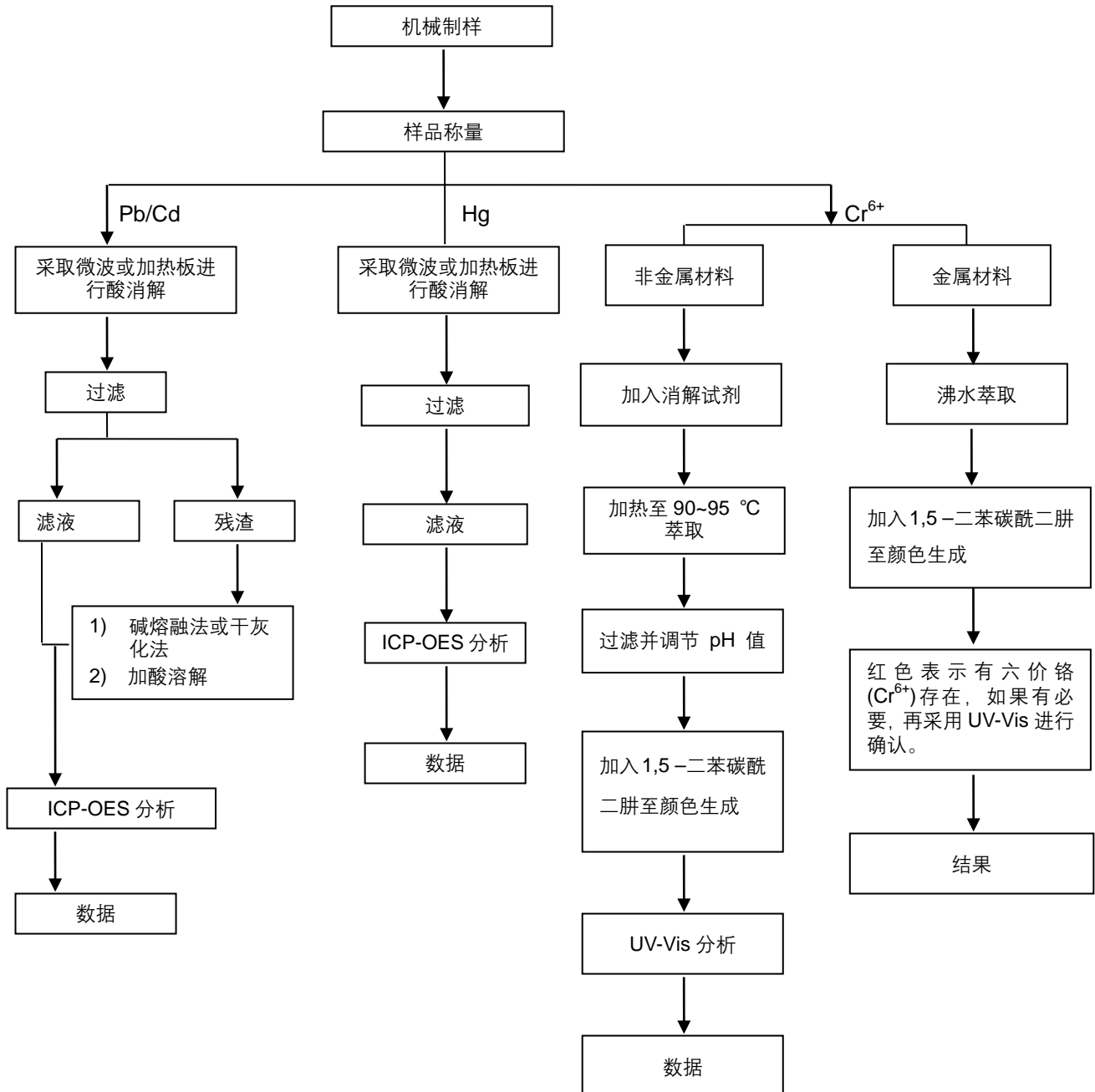
备注：根据申请人的要求，对提交样品所选的材料进行检测。测试结果仅对提交的样品负责。

Pb/Cd/Hg/Cr⁶⁺ Testing Flow Chart

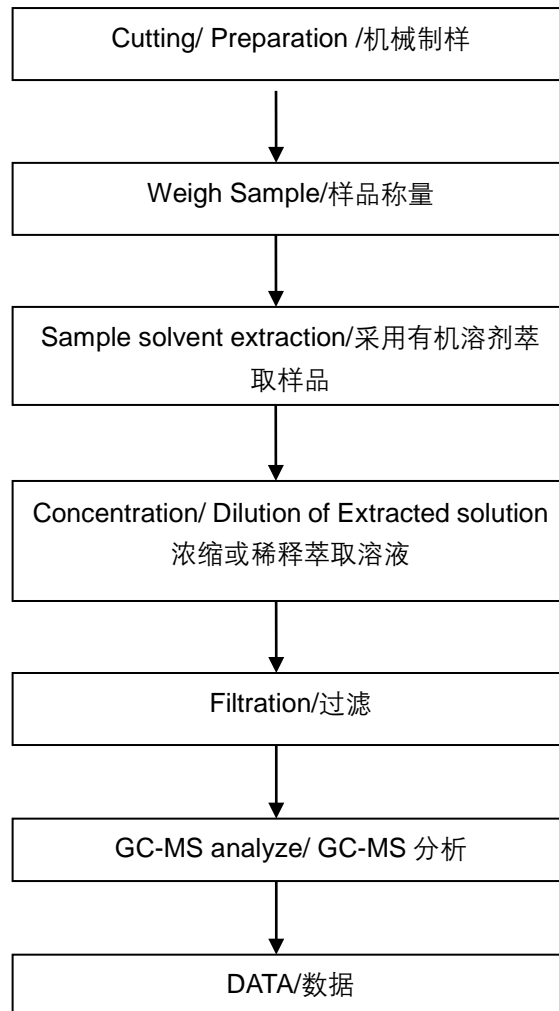
- 1) These samples were dissolved totally by pre-conditioning method according to below flow chart.
(Cr⁶⁺ test method excluded)



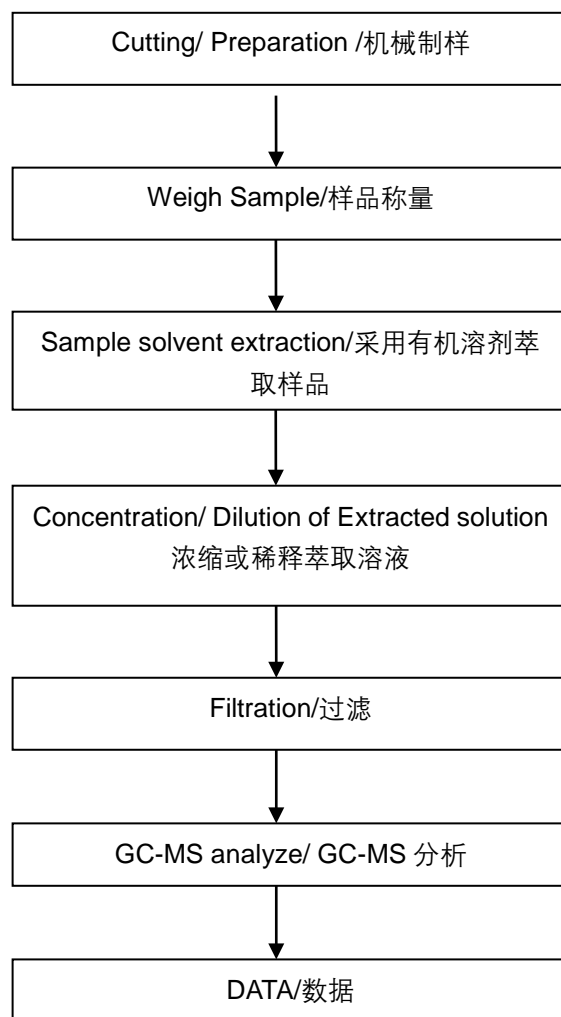
Pb/Cd/Hg/Cr⁶⁺ 测试流程图

 1) 根据以下测试流程图样品在预处理方法中被完全溶解(Cr⁶⁺ 测试方法除外)。


PBBs/PBDEs Testing Flow Chart
多溴联苯/多溴联苯醚 测试流程图



Phthalates Testing Flow Chart
邻苯二甲酸酯 测试流程图



本页结束/End of the Page

样品照片/Sample picture(s):



备注：该检测报告取代由上海微谱化工技术服务有限公司发布的检测报告编号：WP-21037058-JC-01-02CnEn，原报告作废。
Note: This Report cancels and supersedes the Report No. WP-21037058-JC-01-02CnEn issued by Microspectrum Technology Co., Ltd, original report will be invalid from today.

报告结束 End of the Report

—— 声明/DECLARE ——

1. 报告若未加盖“检验检测专用章”或“报告专用章”或编制人、批准人未全部签字，一律无效。
The report is invalid without the stamp of “Special Seal for Inspection or Testing” or without “Special Seal for the Report” or without the signature of the compiler and the approver.
2. 本报告不得擅自修改、增加或删除，否则一律无效。
No unauthorized changes, additions or deletions shall be made to the report.
3. 报告部分提供或部分复制均视为无效。全复制件未重新加盖“检验检测专用章”或“报告专用章”视为无效。
Neither fragmented report nor its incomplete copy shall be deemed valid. The complete copy is invalid without the stamp of “Special Seal for Inspection or Testing” or “Special Seal for the Report”.
4. 如对报告有疑问，请在收到报告后 15 个工作日内提出。
Any queries on the report shall be presented to us within 15 working days after receipt of the report.
5. 本报告结果仅对本次受测样品负责。未加盖 CMA 标志的报告，数据和结果仅供客户内部使用，对社会不具有证明作用。
The results described here in this report are based on the sample(s) tested. The data and results shown in the report without CMA logo are not used as proof for society, only for internal uses.
6. 委托方对样品及其相关信息的真实性负责。
The applicant takes full responsible for the truthfulness of the testing sample(s) and information related thereto.

报告编号/Report No. : WP-21037058-JC-01-02CnEnR1 页码/Page(s) : 10 / 10

7. 未经本公司同意，委托人不得擅自使用检验检测结果进行不当宣传。

Without the permission of the company, any party is prohibited from using the test results and the report for undue publicity.